

STAUROLITE



NEWSLETTER

June 2019



BOARD MEMBERS

President—Jessica Pearson

Vice President—Barbara Woolery

Treasurer—Mary Hedden

Recording Secretary—Andy Morales, Shelli Smith

Corresponding Secretary—Kim Christensen

Advisors—Bill Bessette, Tim Summers, Geri Gilham, Tony Gilham, Jim Wolford, Greg Vidler

Federation Director—Jessica Pearson

Shop Committee—Bill Bessette, Sue Alger, Calvin Shipley, Don Alexander, Greg Vidler

Fieldtrips—JJ Day, Cathy Govaller, Don Alexander, Greg Vidler

Membership—Mary Hedden

Facebook—JJ Day, Tori Agular, Greg Vidler

Website—Cindy Ahlgrim

Meetup—Andy Petty

Instagram—Chris Ayala

PURPOSE OF OBMS

- To inspire the appreciation of rocks, minerals, and awareness in all earth sciences through educational programs, fieldtrips, and the collecting, cutting, & polishing of gem stones.
- Provide a non-profit environment where members can come together to share their experiences & skills
- OBMS is not organized for the private gain of any person. Its property is irrevocably dedicated to charitable or educational purposes and no part of the income or assets shall ever inure to the benefit of any private person.

MEMBERSHIP FEES

Everyone's membership is renewed in January except new members who just joined between October and December. It is easier to track that way.

To JOIN: ONE TIME INITIATION FEE \$10 + MEMBERSHIP FEE

Yearly Fee: Adult \$20, Junior (under 12) \$10,

Couples \$35, Family—3 or more \$40.

Send check to OBMS, 205 W. Benedict #8

San Bernardino, CA 92408

KEEP YOUR EMAIL UP-TO-DATE

We use your email to send the newsletter & up-to-date information about club events. Kimrocks2@sbcglobal.net

MONTHLY CLUB MEETING & BBQ SECOND SATURDAY, JUNE 8

The club meeting will be around 11:30 a.m. and the BBQ will follow. Please bring a side dish to share.

Shop Hours

Tuesday nights 4—8 p.m.

Friday nights 4—8 p.m.

Saturday 10 a.m.—3 p.m.

2nd & 4th Sunday 10 a.m.—2 p.m.

CLUB ACTIVITIES

SUNDAY, JUNE 2— 11 A.M. BRACELET CLASS

(JESSICA, BARBARA, SHERRY)

SATURDAY, JUNE 8— MEETING/BBQ

(ABOUT 11:30 A.M. OR SO)



SATURDAY, JUNE 15 KOKOWEEF FIELDTRIP

BE AT THE WORKSHOP BY 5 A.M.

SUNDAY, JUNE 30—11 A.M. BRACELET CLASS

(KATHLEEN, DANNY, LARRY)

SUNDAY, JULY 7—11 A.M. BRACELET CLASS

SUNDAY, AUG 4—11 A.M. BRACELET CLASS





MESSAGE FROM THE PRESIDENT

- **JESSICA PEARSON**

Hi Rockhounds,

Many people are looking forward to the Kokoweef Fieldtrip. Let's thank Don for bringing back samples that got everyone excited and for arranging the trip with the owner. The group is leaving the workshop by 5 a.m. and returning after 8 p.m. We all look forward to seeing the treasures. Thanks, Don!

We want to thank Greg for arranging the fieldtrips to our local desert recently. We have found some good looking travertine in multiple places. The weather cooperated too; even though it was raining in San Bernardino, it was beautiful skies in the desert I was told. Thanks, Greg!

In the past few months, Kim and Mary have been helping members make a twisted bracelet. There are more classes scheduled in June, July, and August. Thanks Kim and Mary! ...And everyone who has taken the classes.

Helpful hound of the Month goes to Greg. He opens the workshop on two Sundays in the month. He maintains Facebook. He plans fieldtrips and uses his car to keep our club safe on the desert roads. He cuts rocks to help make money for the workshop and helps collect rocks from those who donate to the club. Thanks, Greg!

Let's keep working together. We need everyone helping to make the club work. Please keep paying your dues, your shop fees, and donating your time to help others learn. We need everyone!

OBMS GENERAL/BOARD MEETING

May 11, 2019

From Shelli/Kim

Meeting called to order by Jessica.

Highlights of the minutes for the previous meeting were published in the OBMS newsletter from the previous month and distributed via email to members.

Treasurer's Report—Mary was absent, but gave the Treasurer's report to Kim to share.

SHOP REPORT

Purpose: OBMS is a non-profit environment meant to educate members and the public about earth sciences and lapidary arts.

Liability: The Orange Belt Mineralogical Society, Inc., is not and cannot be held responsible and liable for personal injuries, for damage or loss of property at meetings, workshop, classes, fieldtrips, shows, or any event sponsored or recommended herein.

Safety: Be safe. OBMS has no insurance for medical coverage. You use your own insurance. Remember we are all amateurs. You make your own decisions. Use machines wisely and carefully. Ask for help. Wear safety glasses and dust masks.

Fees: Everyone must pay shop fees. We need to generate enough income to pay for rent, utilities, repairs, and supplies.

Pay for Food: Soda and chips are 50 cents. This helps pay for replenishing and food for the BBQ.

SHOP REPORT

No shop report was given.

Fieldtrips

Sunday, May 19—Travertine. & Agate fieldtrip . Be at the workshop by 6:45 a.m.

Future Fieldtrip Planning

Kokoweef Fieldtrip will be on a Saturday. .It is a 4 plus hour drive. It is past Baker and costs \$20 per bucket. Please let Don, Greg, or Kim know if you are interested in going. Don came back with some great cave onyx . Everyone was excited.

NEW RECORDING SECRETARY

Shelli will be moving. :(We need someone to volunteer to take minutes.

FUNDRAISING IDEAS

Tabled until next meeting.

KEN KUTCH MEMORIAL

His memorial will be held on June 3 at 1 p.m. at Montecito in San Bernardino near Barton and Waterman. We will miss his kind smile and wonderful work. He was an inspiration to all of us.

GREG ROCK DONATION

Greg cut agate slabs as a donation. They are available after the meeting to help raise funds. Thanks, Greg!

Editor: And... thanks to the members who are purchasing the rocks!

THANK YOU

Tien—Published a great rock book! He donated some of his book royalties and more to support the club. Thanks, Tien!

People noticed. The workshop looked cleaner thanks to Mary. She swept the floor and wiped down the counters. Thanks, Mary!

Thank you to Bill S. and Barbara for cooking!

CLASS—SILVER BRACELET

A soldered tri-banded silver bracelet class is planned for June 2, June 30, and more. Mary, Ollie, and Kim have supported the effort . The cost is about \$40 in silver, \$10 lesson, and \$5 shop fee.

CLASS—ANY SHAPE STONE WIREWRAP

Thank you to Brenda and Patsy for providing the class. Thank you to members for taking the class.

CLASS—POLYMER CLAY PENDANT

Thank you to Shelli and Jessica for providing the class. Thank you to members for taking the class.

WEEKDAY WORKSHOP

A member asked to have the workshop open during the day in the week. Other members are interested. Jessica will arrange that for the summer.

MEETING ADJOURNED-BBQ FOLLOWED.



If you want to teach a class, please let Jessica or Kim know. The more people sharing their knowledge the better.

CLUB SLAB SAW FOR SALE

An 18” slab saw is for sale. \$400 for a member or \$500 to a non-member.

SHOP NEWS

COMMITTEE: BILL BESSETTE, SUE ALGER, CALVIN SHIPLEY, DON ALEXANDER, GREG VIDLER

Opening: Jim and Mary are opening on Saturdays. Andy is opening on Friday nights. Sue and Bill S. are opening on Tuesday nights. Greg is opening on the 2nd and 4th Sundays. Jessica is opening as needed.

WORKSHOP HOURS:

Tuesday & Friday 4—8 p.m.
Saturday 10 a.m.—3 p.m.
2nd & 4th Sunday 10 a.m.—2 p.m.

THANK YOU CLEAN UP & REPAIRS

Thank you to Don, Larry, Joe, and Danny for volunteering to help with the workshop. Thank you to Bill for fixing the equipment.

COUNTERTOPS

Clean off the countertops at the end of the day. Take your stuff home or put it in a locker. We have a lot of members who all need workspace. OBMS is not responsible for loss items.

SLAB SAWS SHARE EQUIPMENT

If slab saws are in high demand, please share. Just cut one slab and let another person work too. The club is here to support socializing and education about lapidary.

GRINDING MACHINES

Use enough water on the grinding belts, but not so much it sprays all over. Do not press too hard. It can knock off the diamond quicker. Let the belt do the grinding..

TRIM SAWS

Used for trimming slabs that are about 1/4 inch to shape them for cabochon making. Do not press hard. It can knock off the diamond from the blade. If the motor stalls or slows, you are pressing too hard.

EVERYONE CAN HELP

Everyone can help keep the workshop clean. Put things back. Refill supplies. Clean off counters. Empty the trash. Mop, sweep. Ask to help.

WORK TOGETHER TO KEEP IT A FUN PLACE TO BE! WE ARE SO LUCKY TO HAVE A WORKSHOP.

“HELPFUL HOUND” AWARD

This award recognizes extra work around the workshop. People who give their time to clean up, fix items, and share their knowledge to help the club. We want to thank everyone who helps keep the club and workshop going.

Jan-Barbara	Feb— Andrew
Mar—Don	April-Brenda
May-Greg.	June-Bill B.
July-Arvid	Aug-George & Pam
Sep-Ollie	Oct-Mary
Nov-Nelma & Larry	Dec—Duane



Kim – Newsletter: Keep your e-mail address up-to-date at kimrocks2@sbcglobal.net

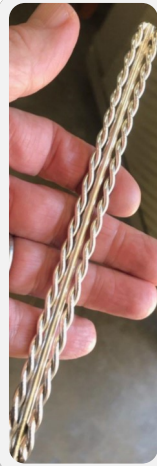
Mary—Membership Database—Keep your contact information up-to-date at the workshop.

Greg & JJ– Facebook: Orange Belt Mineralogical Society page and check it out.

Cindy —OBMS Website—Check out <http://obmsrocks.yolasite.com>

Andy—Meetup.com—OBMS Rockhound Group.

MAY 2019—ROCKS, HOBBY, FRIENDS





SILVER—UNDER \$15



GETTING STARTED SILVERSMITHING —WHAT TO BUY TO MAKE PENDANTS

The item numbers are from **Riogrande.com**, but there are other places you can buy silver. The prices below are an estimate at silver being about **\$16/oz.**

Metal thickness is measured by gauge. The smaller the number, the thicker the metal. This means a 24 ga sheet is thicker than a 26 ga. sheet.

Backplate—buy 24 ga. or thicker

100124 Sterling Silver Sheet

6" x 1.5", 24 ga \$21.33

- Can make 4 of the 30x22 mm cabs.

Bezel—buy either plain or gallery wire.

Sterling Silver is less prone to melting than fine silver, but fine silver will bend easier.

103269—Gallery Wire SS Style B \$7.87

1 foot

104030—Fine Silver Bezel \$4.41

1 foot, 26 ga, 3/16"

100290—Sterling Silver Strip \$3.38

1 foot, 28 ga., 3/16"

Decoration/bail/open back

100320 Square Wire SS \$2.32

2 feet, 20 ga.

(open back, twist for bail)

100316 Round Wire SS \$6.13

2 feet, 16 ga.

(open back, bail,

twist for decoration, 2.6 mm high)

Solder

101100 Silver Wire Solder, Easy \$1.08

101703 Silver Wire Solder, Med \$1.15 x2

101704 Silver Wire Solder, Hard \$1.15

Flux

504086 Handy Flux Paste \$10.75



LEARNING NEW SKILLS

Periodically classes are available in different techniques. A sign up sheet is available at the workshop when classes are scheduled.

IN GENERAL, MEMBERS HELP MEMBERS LEARN NEW TECHNIQUES.

Cabbing—Almost anyone at the shop can help you with cabbing. You often see Jim, Andy, Alex, Bill,, and Mary making cabs. Tony can help too.

Slab Cutting—Almost anyone at the shop can help you slab rocks. You often see Jim, Tien, Don., Greg, Danny, and Bill B. cutting rock.

Wirewrapping— Shelli, Jessica, Alex, and Mary are ready to help you learn to wirewrap.

Wire Weaving—Shelli and Joey can help you learn.

Beading - Jessica and Sherry can help with beading.

Silversmithing—Kim, Andy, Mary, Sherri, Tony, and Gia are people who can help.

Carving—Tony and Penny are a good sources to help you learn to carve.

Sphere Making—Bill B., Tony, and Penny can teach sphere making.

Chain Maille—Sherry can help you with chain maille projects.

Faceting—Kim can help you learn to facet.

Lost Wax Casting—Kim will help. Looking for others to help.

Tumbling—Andy and Greg can help you learn to tumble.

Identifying Rocks—Tien, Jim, Tony, Bill can help you identify rocks.

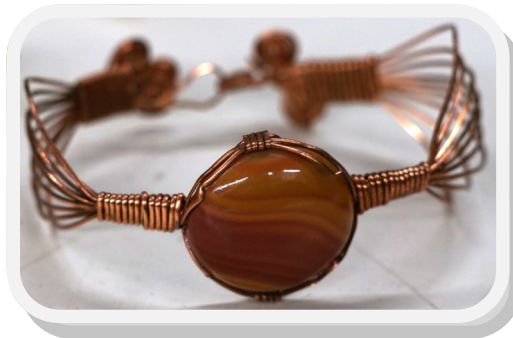
If you need help with using equipment, cabbing a stone, or making jewelry, ask around at the workshop. The club is there to support and encourage each other. Remember: be careful and safe. If equipment needs service, leave a note or talk to Bill B.

If you want to be added to this list to help others, let Kim know — at kimrocks2@sbcglobal.net.

TIEN NEEDS ROCKS FOR ANOTHER BOOK

Tien needs members to let him use pictures of their rocks in another book. He wants to write a geology story about member's rocks. Please talk with him about the rocks you can let him photograph for his next book.

You can look at his just published book *Wandering in Rock Country* by Tien Lee at the workshop or buy it on Amazon.



SOME UPCOMING ROCK SHOWS

The <http://www.cfmsinc.org/> site has rock show listings.

You can find show listings for all over the USA and Canada at <http://The-Vug.com> , the <http://www.rockngem.com> site and the magazine too.

June 7-9 La Habra

North Orange County Gem & Mineral Society
La Habra Community Center
100 W. La Habra Blvd
Hours: Friday 5 –8, Sat 10—5, Sun 10—4

June 8-9 Glendora

Glendora Gems
Goddard Middle School
859 E. Sierra Madres Ave
Hours Sat. 10—5, Sun 10—4

June 29-30 Culver City

Culver City Rock & Mineral Club
Veterans Memorial Auditorium
4117 Overland Ave
Hours: Sat 10—6, Sun 10—5

June 29 –30 Escondido

Palomar Gem and Mineral Club
California Center for the Arts
340 N Escondido Blvd
Hours 10—5

TURQUOISE

Turquoise is a hydrous aluminum phosphate with a hardness of 5 to 6 on the Moh scale of 1—10. Gem quality turquoise is hard. Low grade turquoise is soft.



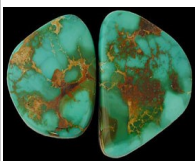
Turquoise is formed by the percolation of meteoric or groundwater through aluminous rock in the presence of copper. The rock in which turquoise is found is sometimes called the

“mother rock.” Veins or spots of this rock which show up as markings in turquoise are called



“matrix.” Black matrix includes the minerals manganese, iron or silver, while brown matrix is colored by the presence of iron oxide or copper. White matrix consist of white quartz or silica.

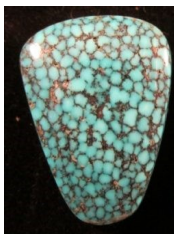
Turquoise is mined in many different areas of the Southwest, as well as elsewhere around the world. **Turquoise comes in many different shades of blue and green;** a single mine often produces a variety of colors of stone and matrix. Turquoise attains it's color from the heavy metals in the ground where it forms. **Blue turquoise forms** when there is cop-



per present, which is the case with most **Arizona** turquoise.. **Green turquoise forms** when there is **iron present**, which is the case with most **Nevada** turquoise.

Royston turquoise is known for its beautiful colors ranging from **deep forest green to rich, light blues set off by a heavy, brown matrix.**

Kingman mine is located in Mohave County in western Arizona. The copper mining in the Mineral Park Mining District around Kingman has produced a larger supply of turquoise throughout the years. The **matrix of most Kingman is naturally white but is usually dyed to black**



Number 8 mine is in Calin, Nevada, and was at one time a gold and copper mining operation on the west side of the Tuscarora Mountain



Range. Number 8 turquoise is famous for its **black, golden-red and brown spider web matrix set off with the unique bright powder blue turquoise** background. The mine is now depleted and Number 8 turquoise is valuable.

Not all turquoise is natural. Often it is difficult to tell whether a stone's color is true, the matrix real, and the quality of the stone good. Turquoise can be dyed or may be stabilized with plasticizing epoxy, resin, oils or waxes—especially if it was a low grade or soft stone in its natural state. Turquoise also may be reconstituted using powdered turquoise and an epoxy or plastic. Reconstituted turquoise or block turquoise has been made since the 1930s, and the technologies used today are so complex that stone it is impossible to tell whether a stone is natural or reconstituted. Spiderweb matrix in turquoise is often created today in block form.

Simple Tests for Authenticity

Some simple tests for the authenticity of a stone exists. They include:

Hot Needle Test—If the tip of a hot needle only chars the turquoise, it probably is a natural stone. If it chars and melts the stone, then the stone is either stabilized with plasticizing materials or the stone is not genuine.

Knife Scratch Test—A steel knife blade usually will scratch turquoise. If the scratch edges look ragged under magnification, then the stone probably is real. If the edges look smooth, the stone is stabilized.

Ultraviolet Light Test—Turquoise that has been plasticized often fluoresces.

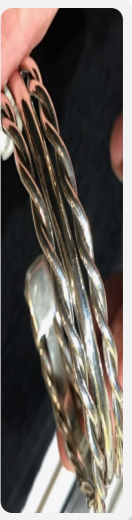
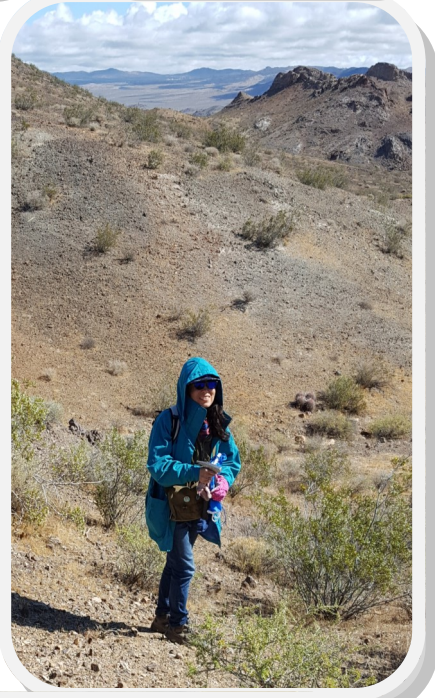
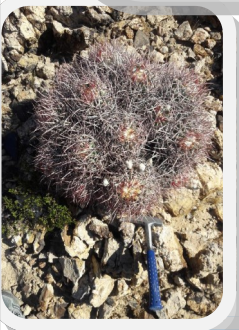
Thanks to Arvid for the use of the book ***Indian Jewelry of the American Southwest*** by William & Sarah Turnbaugh.

The website ***TucsonTurquoise.com*** has a lot of pictures and information about turquoise.

Tien's book: *Wandering Through Rock Country.*

You can order it on Amazon. Great pictures along with wonderful geologist's insight.

MAY 2019—ROCKS, FRIENDS, & HOBBY



ROCKHOUND WEBSITES

(Use these sites at your own risk.)

[//OBMSROCKS.YOLASITE.COM](http://OBMSROCKS.YOLASITE.COM)

Our club website.

[//WWW.FACEBOOK.COM/](http://WWW.FACEBOOK.COM/)

Our group is “Orange Belt Mineralogical Society” OBMSrocks will get you there.

[//GROUPS.YAHOO.COM/GROUP/LA-ROCKS/](http://GROUPS.YAHOO.COM/GROUP/LA-ROCKS/)

Full of rock enthusiasts and postings of rock hunting events.

[//WWW.CFMSINC.ORG](http://WWW.CFMSINC.ORG)

Our club is a member of CFMS. There are lots of rock hunts scheduled.

[//WWW.EBAY.COM](http://WWW.EBAY.COM)

Search rough rocks or rock slabs

[//WWW.HIGHDESERTLAPIDARY.COM](http://WWW.HIGHDESERTLAPIDARY.COM)

Wide variety of slabs with good pictures. (Almost like being at Quartzsite.)

Good for learning the names of the rocks

[//WWW.FACEBOOK.COM/](http://WWW.FACEBOOK.COM/)

“Lapidary swap shop” is a group for posting items to trade equipment, tools, rocks with other enthusiasts.

[//WWW.SCHOOLGEMOLOGY.COM/](http://WWW.SCHOOLGEMOLOGY.COM/)

ISGTURQUOISEBUYERSGUIDE/INDEX.HTML

Bob suggested this site. It discusses buying the real from the fake turquoise.

Jewelry Making Supplies:

[//WWW.RIOGRANDE.COM](http://WWW.RIOGRANDE.COM)

Albuquerque, NM -A huge jewelry supply store. Shows the silver spot market price on its front page. Free online-videos—click on Learn with Rio. (800) 545-6566

[//WWW.THUNDERBIRDSUPPLY.COM](http://WWW.THUNDERBIRDSUPPLY.COM)

Established in 1971. Indian jewelry supplies. Prices were good on metal. Show the silver spot market price. (800) 545-7968

NATIONAL GEOGRAPHICS TOPOGRAPHICAL MAPS

National Geographics launched a website for printing topographical maps for free.—Thanks, Calvin.

<https://www.natgeomaps.com/trail-maps/pdf-quads/>

[//OTTOFREI.COM](http://OTTOFREI.COM)

Oakland, CA—A complete jewelry supply store. Often 5% coupon in Art Jewelry and Lapidary Journal magazine. (800) 772-3456

LAPIDARY EQUIPMENT & SUPPLIES:

[//COVINGTON-ENGINEERING.COM](http://COVINGTON-ENGINEERING.COM)

☺ ☺ LOCAL ☺ ☺

715 WEST COLTON AVE

Redlands, CA—Manufacturer of lapidary equipment and some supplies/books. (877) 793-6636

[//WWW.DIAMONDPACIFIC.COM/](http://WWW.DIAMONDPACIFIC.COM/)

2620 W. Main Str.

Barstow, CA—Manufacturer of lapidary equipment and some supplies/books. (800)253-2954

[//WWW.JBFC.COM/](http://WWW.JBFC.COM/) JOHNSON BROTHERS

1452 N. Batavia St. **New Location**

Orange, CA—A variety of lapidary and some jewelry making tools.

(714) 771-7007

[//KINGSLEYNORTH.COM](http://KINGSLEYNORTH.COM)

Norway, MI –A variety of lapidary equipment, tools, supplies, books (800) 338-9280

MAGAZINES:

[//WWW.JEWELRYMAKINGDAILY.COM](http://WWW.JEWELRYMAKINGDAILY.COM)

(LAPIDARY JOURNAL/JEWELRY ARTIST)

Login for free to get access to online videos and projects.

[//WWW.ROCKNGEM.COM](http://WWW.ROCKNGEM.COM)

Show date listings.

ROCK SUPPLIES:

NEWERAGEMS.COM

Grass Valley, CA—Recommended in faceting booklet. Has capping and faceting rough. (800) 752-2057

[GEMS A PLENTY](http://GEMSAPLENTY.COM)

575 N Central Ave
Upland, CA
(909) 985-1999

EARTH'S TREASURES

582 Alder Rd
Crestline, CA 92407
(909) 338-2010

SHOP USE AND MAINTENANCE

Proper use of equipment: Help reduce the number of repairs by using the equipment carefully.

Trim Saws

- Trim saws are used for preforming or trimming cabs from slabs. There are three trim saws: blue, red, and Rock Rascal.
- The blue trim saw has the thickest blade. This saw is the saw that should be used most of the time. Use this saw if you are trimming obsidian, agate, or harder material.
- The red saw is a lighter duty saw. It is used for cutting smaller pieces and trimming corners. It can be used to trim lighter material like howlite.
- The Rock Rascal is for specialty cutting only. It has a delicate, expensive thin blade used to trim more expensive, soft stones like turquoise and opal.

Trim Saw Usage

- **Make sure there is water in the saw basin.**

Turn the blade on to see water drips off the blade in a light stream before cutting on a rock. This keeps the rock cool and cleans the rock bits off the blade.
- **Push lightly.**

Do not push hard against the blade. If the blade slows down or stops, you are pushing too hard. You can also listen to the cut. It should be a light sound.

Let the blade cut the rock slowly, so the diamond bits do not chip off the blade. This helps make the blade last longer.
- **When done:**

Throw the larger bits away in a scrap bucket or trash. Rinse the tray top with water and dry it clean. Replace the water if the water is cloudy.
- **Closing at the End of the Shop Day**

At the end of the day, drain the saw basin and dry the saw top. This is so the blades do not rust and last longer.

Large Slab Saws

- The large slab saws are used for cutting rock slabs from boulders less than 2/3 the blade height.
- **Use scraps of wood wedges to make good contact.**

Carefully place shims around the rock so the vise – shims are touching many areas of the rock. Rocks need at least three good contact points.
- **Tighten the vise. Then, pull on the rock vigorously.**

Make sure the vise is tight and the rock can not move. When a rock slips, it can destroy—bend—a blade. Large saw blades are very expensive to replace. To be safe, **tighten the vise again by hand.**
- **Check the blade will not saw into the vise.**

Place the rock so the rock sticks out from the vise. Four turns of the vise knob is about ¼ inch. Make sure the rock sticks out from the end of the vise for the number of slabs you want to cut. **Recheck this every time you start a new cut.**
- **Pull the rock back away from the blade.**

Do not start the blade on the rock; pull the vise carriage back so the rock is away from the blade before starting the blade.
- **Turn the blade by hand before starting. Tighten the carriage set screws.**

Make sure the blade has no contact with the rock before starting.
- **Check there is enough oil.**

Oil should be dripping off the blade when you turn it. Otherwise, you need to add oil or unplug the tubing.
- **Stay with the saw while it is cutting.**

The blade and vise can be damaged if the saw jams after the slab has fallen.
- **When done, throw away the rock bits and wipe off the trays. Close the lid.**
- **Please do not change the belt speed.**

Leave the belts where they are set. Let the blade do the cutting slowly so the diamond stays on the blade longer.
- **Please do not change the vise stops.**

They protect the machine.

ROCK CLEAN UP PROCESS

1. **Use the kitty litter box.** There is a box with kitty litter. Put the rock in the box and pour kitty litter over the rock to absorb the oil. Brush the kitty litter off the rock.
2. **Use the Simple Green bucket.** There is a bucket with Simple Green to help remove the oil. Dunk the rock in the bucket and use a brush to help remove the oil in crevices.
3. **Use the rinse bucket.** There is a water bucket with water in it. After steps 1 & 2, dunk the rock in the water bucket for final cleaning.

Do not put a rock in the sink to clean it. The sink drain was damaged—torn—by rocks sliding against it.

GRINDERS

- **Turn main water valves on/off.**
 - There is a main water valve near the first grinder by the sink. There is another valve about every two grinders. These valves gets turned on/off depending on which set of grinders are in use to save water.
 - Each grinder has its own water valve on top of the grinder which controls the water flow to the grinder's belt.
- **Keep a light stream of water on the belt.**
 - Turn water on so there is a light stream of water on the belt before grinding a rock. - The belt should look wet as you grind.
 - This keeps the rock cool and cleans the rock bits off the belt.
- **Push lightly.**
 - Do not push hard against the belt. Harder material like agate grinds slower than soft material like turquoise.
 - Use the entire width of the belt so the belt wears evenly. If you only work in the center, a groove can form.
 - Let the belt cut the rock slowly so the dia-

FLAT LAPS

- There are two large flat laps and two changeable top laps.
- One large wheel is for coarse 40-80 grit only. Its base is heavy duty steel and the grit does not scratch the base. There is no grit sign on this wheel.
- The other large wheel is for finer grit of 220 or more. The wheel can be scratched by the coarser grit. Only use fine grit on this wheel. It has a 220 sign on the outside of the box.
- Finer polishing of slab/geode material should be done on one of the other two laps with changeable tops.
- **When done,** wash off the grit and dry the wheel.

POLISHING WHEEL

- **Keep spraying water on the cerium-oxide polishing wheels** while you work. It should be a fine slush, paste to polish properly. Keeping the wheel wet keeps the rock cool and lets the polish flow over the rock.
- Note: Dry polishing is bad on the lungs. Wear a mask if you decide to do that..

CLOSING

- **Grinders:** Make sure all the water valves are closed. Mop in front of the grinders.
- **Water Trim Saws:** Trim saws should be **drained before closing and the trays rinsed off.** The waste water should be poured out in the parking lot trough and the sediment dumped into the dumpster.
- **Tripoli/Rouge Polishing Station:** Wipe the tray out and throw the loose fibers away.
- **Wax pot:** Unplug the wax pots and iron.
- **Soldering Station:** Check the torch is turned off and check the pickle pot is unplugged.
- **Empty the trash**
 - Look around and tidy up.
- **Turn the Main Breakers Switch Off**

OBMS Workshop

205 West Benedict #8
San Bernardino, CA 92408
PH (909) 381-0089

Workshop Hours

Tuesday

4 p.m.— 8 p.m.

Friday

4 p.m.— 8 p.m.

Saturday

10:00 a.m. – 3:00 p.m.

2nd & 4th Sunday

10 a.m.— 2:00 p.m.

Monthly Club Meeting

The SECOND Saturday of the month at the workshop most of the time.

Monthly BBQ or Picnic

The SECOND Saturday of the month right after the club meeting. Bring your favorite dish to share and a projects to show.

Sun	Mon	Tue	Wed	Thu	Fri	Sat
June 2019		Shop 4-8 Closed			Shop 4-8	1 Shop 10—3
2 Bracelet Class 11 a.m.	3	4 Shop 4-8	5	6	7 Shop 4-8 ☞	8 Shop 10—3 Mtg/BBQ 11:30 a.m.
9	10	11 Shop 4-8	12	13	14 Shop 4-8	15 Shop 10-3
16 Shop 10—2	17	18 Shop 4-8	19	20	21 Shop 4-8	22 Shop 10-3
23 No 31 Yes Bracelet Class 11am	24	25 Shop 4-8	26	27	28 Shop 4-8	29 Shop 10-3

Orange Belt Mineralogical Society, Inc.
205 West Benedict #8
San Bernardino, CA 92408

Newsletter articles and advertisement are due by the 20th of the month.

Send information for the newsletter to Kim at kimrocks2@sbcglobal.net

