

# STAUROLITE



## NEWSLETTER

July 2019



### BOARD MEMBERS

**President**—Jessica Pearson

**Vice President**—Barbara Woolery

**Treasurer**—Mary Hedden

**Recording Secretary**—Andy Morales

**Corresponding Secretary**—Kim Christensen

**Advisors**— Bill Bessette, Tim Summers, Geri Gilham, Tony Gilham, Jim Wolford , Greg Vidler

**Federation Director**—Jessica Pearson

**Shop Committee**—Bill Bessette, Sue Alger, Calvin Shipley, Don Alexander, Greg Vidler

**Fieldtrips**—JJ Day, Cathy Govaller, Don Alexander, Greg Vidler

**Membership**—Mary Hedden

**Facebook** — JJ Day, Tori Agular , Greg Vidler

**Website**—Cindy Ahlgrim

**Meetup**—Andy Petty

**Instagram**—Chris Ayala

### PURPOSE OF OBMS

- To inspire the appreciation of rocks, minerals, and awareness in all earth sciences through educational programs, fieldtrips, and the collecting, cutting, & polishing of gem stones.
- Provide a non-profit environment where members can come together to share their experiences & skills
- OBMS is not organized for the private gain of any person. Its property is irrevocably dedicated to charitable or educational purposes and no part of the income or assets shall ever inure to the benefit of any private person.

### MEMBERSHIP FEES

Everyone's membership is renewed in January except new members who just joined between October and December. It is easier to track that way.

To JOIN: ONE TIME INITIATION FEE \$10 + MEMBERSHIP FEE

Yearly Fee: Adult \$20, Junior (under 12) \$10,

Couples \$35, Family—3 or more \$40.

Send check to OBMS, 205 W. Benedict #8

San Bernardino, CA 92408

### KEEP YOUR EMAIL UP-TO-DATE

We use your email to send the newsletter & up-to-date information about club events. Kimrocks2@sbcglobal.net

### MONTHLY CLUB MEETING & BBQ SECOND SATURDAY, JULY 13

The club meeting will be around 11:30 a.m. and the BBQ will follow. Please bring a side dish to share.

### Shop Hours

Tuesday nights 4—8 p.m.

Wednesday 9 am—1 pm

Friday nights 4—8 p.m.

Saturday 10 a.m.—3 p.m.

2nd & 4th Sunday 10 a.m.—2 p.m.

Wed. 9am –1 pm Starting June 19— July 31

### CLUB ACTIVITIES

#### SUNDAY, JUNE 30—11 A.M. BRACELET CLASS

(KATHLEEN, DANNY, LARRY)

#### SUNDAY, JULY 7—11 A.M. BRACELET CLASS

(JOE, CHRIS, ALISHA)

#### SATURDAY, JULY 13— MEETING/PICNIC

Bring a main dish or a side dish

(ABOUT 11:30 A.M. OR SO)

☺ ☺ ☺

#### SUNDAY, AUG 4—11 A.M. BRACELET CLASS

(GLORIA, MIKE, DISA)

#### TENTATIVE SUNDAY, SEP 1— BRACELET CLASS

(DIANA, HANH, OLLIE)

### New Workshop Day

For the month of July, we are open during a week day. Come on down to the workshop.

**Wednesday 9 am - 1 pm**



## MESSAGE FROM THE PRESIDENT

### • JESSICA PEARSON

Hi Rockhounds,

New! Our workshop is open during a weekday during the summer. We are now open Wednesday from 9 am—1 pm. Come on down and enjoy this opportunity. It is fun to share ideas and enthusiasm.

We need to thank Mary and Chris Phillips for donating a grinder station, rocks, and supplies. We appreciate their kindness. Thanks, Mary and Chris.

I heard everyone enjoyed the trip to Kokoweef, even with the early morning start time! People are interested in going back in the fall. Thanks, Don and Greg. Our summer fieldtrips are being planned. Keep an eye out for an email.

Helpful hound of the Month goes to Mary. She worked with Jessica a time consuming transaction with the bank. She is being an instructor in our bracelet class and teaching new members how to use the equipment in our workshop. She supports opening the workshop when needed. Some members have noticed. She has been cleaning our workshop: wiping off counters, washing the floor, and straightening things up. Thanks, Mary.

Let's keep working together. We need everyone helping to make the club work. Use the equipment carefully. Don't force the machines to work harder than they should. Thanks to many people donating money and buying rocks to support our club. Thanks to many donating their time to fix equipment and clean the workshop! We need everyone!

## OBMS GENERAL/BOARD MEETING

Jun 8, 2019

From Kim/Mary

**Meeting called to order** by Jessica.

Highlights of the minutes for the previous meeting were published in the OBMS newsletter from the previous month and distributed via email to members.

**Treasurer's Report**—Mary gave the Treasurer's report .

## SHOP REPORT

**Purpose:** OBMS is a non-profit environment meant to educate members and the public about earth sciences and lapidary arts.

**Liability:** The Orange Belt Mineralogical Society, Inc., is not and cannot be held responsible and liable for personal injuries, for damage or loss of property at meetings, workshop, classes, fieldtrips, shows, or any event sponsored or recommended herein.

**Safety:** Be safe. OBMS has no insurance for medical coverage. You use your own insurance. Remember we are all amateurs. You make your own decisions. Use machines wisely and carefully. Ask for help. Wear safety glasses and dust masks.

**Fees:** Everyone must pay shop fees. We need to generate enough income to pay for rent, utilities, repairs, and supplies.

**Pay for Food:** Soda and chips are 50 cents. This helps pay for replenishing and food for the BBQ.

### NEW RECORDING SECRETARY

Shelli moved. We need someone to volunteer to take minutes.

### SHOP REPORT

**Large Slab Saw Down:** Saw needs a new clutch. The cost estimate \$350. Motion passed to fix saw.

**Chop Saw Down:** Belt broke. New belt bought. Need Bill's help to replace it.

**Diamond Wheel Grinder :** Edge of wheels ground away. Please do to use the edge of the wheel to grind stones. Just sweep across the entire face, not on the side of the face. Do not grind wedges with the wheel. It knocks the diamond off the wheel..

### Fieldtrips

Kokoweef Fieldtrip will be on a **Saturday, June 15**. Meet at the workshop by 5 am. We will stop in Barstow, Baker, and Zinc Rd. It is a 4 plus hour drive. It is past Baker and costs \$20 per bucket. Bring geology pick, bucket, knee pads, water, sunscreen, hat , gloves. Email sent out about times and trip

### Future Fieldtrips

Longer Beach Trip—overnight near Lompoc.

Local Beach Trip—TBD

August—Pam & George's rockshop & BBQ

John's House in Riverside to buy rocks

### CLASS—SILVER BRACELET

A soldered tri-banded silver bracelet class is planned for June 3, July 7, and Aug. 4. Mary and Kim are teaching the classes. The cost is about \$40 in silver, \$10 lesson, and \$5 shop fee.

### KEN KUTCH MEMORIAL

Some members attended Ken's Memorial Services. The family were glad we came.

### WEEKDAY WORKSHOP

During the summer, the workshop will be open on Wednesdays from 9 am—1 pm starting July 19—July 31. Jessica will open.

### GREG ROCK DONATION

Greg sorted over 1,000 pound of rocks. He brought some for sale to donate funds to the club. Thanks, Greg!

### ADVERTISING ROCK CLUB

Greg is maintaining FACEBOOK. There is a new link to our page. <https://www.facebook.com/obmsrockhounds/>

Chris is starting Instagram.. [http://www.instagram.com/obms\\_rocks/](http://www.instagram.com/obms_rocks/)

Andy maintains meet up at Meetup.com Group San Bernardino OBMS Rockhounds.

<https://www.meetup.com/OBMSrocks-Lapidary-Hobby/>

### THANK YOU

Thank you to Barbara for donations. Thank you to Greg for cutting rocks for donations. Thank you to Don and Greg for planning the Kokoweef Fieldtrip.

### MEETING ADJOURNED-BBQ FOLLOWED.

### FACEBOOK LINKS

The Page allows people to follow general announcements. The Group allows members to interact - ask questions, share information, pictures and memes (or whatever) and make their own topic-related announcements. The Group is open to OBMS members (or others who explain why they want to join our Facebook Group).

Group: <https://www.facebook.com/groups/2218368961613123/?ref=share>

Page: <https://www.facebook.com/obmsrockhounds/>

## SHOP NEWS

**COMMITTEE: BILL BESSETTE,  
SUE ALGER, CALVIN SHIPLEY,  
DON ALEXANDER, GREG VIDLER**

Opening: Jim and Mary are opening on Saturdays.  
Andy is opening on Friday nights. Sue and Bill S. are opening on Tuesday nights. Greg is opening on the 2nd and 4th Sundays. Jessica is opening as needed.

## WORKSHOP HOURS:

Tuesday & Friday 4—8 p.m.  
Wednesday 9 am—1 pm  
Saturday 10 a.m.—3 p.m.  
2nd & 4th Sunday 10 a.m.—2 p.m.

## THANK YOU CLEAN UP & REPAIRS

Thank you to Greg, Don, Bill, Penny, and Joe for working on equipment. Thank you to Mary for cleaning up the workshop.

## COUNTERTOPS

Clean off the countertops at the end of the day. Take your stuff home or put it in a locker. We have a lot of members who all need workspace. OBMS is not responsible for loss items.

## SLAB SAWS SHARE EQUIPMENT

If slab saws are in high demand, please share. Just cut one slab and let another person work too. The club is here to support socializing and education about lapidary.

## GRINDING MACHINES

Use enough water on the grinding belts, but not so much it sprays all over. Do not press too hard. It can knock off the diamond quicker. Let the belt do the grinding..

## TRIM SAWS

Used for trimming slabs that are about 1/4 inch to shape them for cabochon making. Do not press hard. It can knock off the diamond from the blade. If the motor stalls or slows, you are pressing too hard.

## EVERYONE CAN HELP

Everyone can help keep the workshop clean. Put things back. Refill supplies. Clean off counters. Empty the trash. Mop, sweep. Ask to help.

## “HELPFUL HOUND” AWARD

This award recognizes extra work around the workshop. People who give their time to clean up, fix items, and share their knowledge to help the club. We want to thank everyone who helps keep the club and workshop going.

Jan-Barbara	Feb— Andrew
Mar—Don	April-Brenda
May-Greg.	June-Mary
July-Arvid	Aug-George & Pam
Sep-Ollie	Oct-Mary
Nov-Nelma & Larry	Dec—Duane



**Kim – Newsletter:** Keep your e-mail address up-to-date at [kimrocks2@sbcglobal.net](mailto:kimrocks2@sbcglobal.net)

**Mary—Membership Database—**Keep your contact information up-to-date at the workshop.

**Greg & JJ– Facebook:** Orange Belt Mineralogical Society page and check it out.  
<https://www.facebook.com/obmsrockhounds>

**Chris—Instagram –OBMS\_ Rocks**  
[https://www.instagram.com/obms\\_rocks](https://www.instagram.com/obms_rocks)

**Cindy —OBMS Website—**Check out  
<http://obmsrocks.yolasite.com>

**Andy—Meetup.com—**OBMS Rockhound Group  
<https://www.meetup.com/OBMSRocks-Lapidary->

JUNE 2019—HOBBY, FRIENDS, FUN





## SILVER—AROUND \$15



### GETTING STARTED SILVERSMITHING —WHAT TO BUY TO MAKE PENDANTS

The item numbers are from **Riogrande.com**, but there are other places you can buy silver. The prices below are an estimate at silver being about **\$16/oz.**

Metal thickness is measured by gauge. The smaller the number, the thicker the metal. This means a 24 ga sheet is thicker than a 26 ga. sheet.

**Backplate**—buy 24 ga. or thicker  
100124 Sterling Silver Sheet  
6" x 1.5", 24 ga \$21.33  
- Can make 4 of the 30x22 mm cabs.

**Bezel**—buy either plain or gallery wire.  
Sterling Silver is less prone to melting than fine silver, but fine silver will bend easier.

103269—Gallery Wire SS Style B \$7.87  
1 foot

104030—Fine Silver Bezel \$4.41  
1 foot, 26 ga, 3/16"

100290—Sterling Silver Strip \$3.38  
1 foot, 28 ga., 3/16"

**Decoration/bail/open back**  
100320 Square Wire SS \$2.32  
2 feet, 20 ga.  
(open back, twist for bail)

100316 Round Wire SS \$6.13  
2 feet, 16 ga.  
(open back, bail,  
twist for decoration, 2.6 mm high)

**Solder**  
101100 Silver Wire Solder, Easy \$1.08  
101703 Silver Wire Solder, Med \$1.15 x2  
101704 Silver Wire Solder, Hard \$1.15

**Flux**  
504086 Handy Flux Paste \$10.75



## LEARNING NEW SKILLS

Periodically classes are available in different techniques. A sign up sheet is available at the workshop when classes are scheduled.

### IN GENERAL, MEMBERS HELP MEMBERS LEARN NEW TECHNIQUES.

**Cabbing**—Almost anyone at the shop can help you with cabbing. You often see Jim, Andy, Alex, Bill,, Greg, and Mary making cabs. Tony can help too.

**Slab Cutting**—Almost anyone at the shop can help you slab rocks. You often see Jim, Tien, Don., Greg, Danny, and Bill B. cutting rock.

**Wirewrapping**— Jessica, Alex, and Mary are ready to help you learn to wirewrap.

**Wire Weaving**—Joey and Sherry can help you learn.

**Beading** - Jessica and Sherry can help with beading.

**Silversmithing**—Kim, Andy, Mary, Tony, and Gia are people who can help.

**Carving**—Tony and Penny are a good sources to help you learn to carve.

**Sphere Making**—Bill B., Tony, and Penny can teach sphere making.

**Chain Maille**—Sherry can help you with chain maille projects.

**Faceting**—Kim can help you learn to facet.

**Lost Wax Casting**— Kim will help. Looking for others to help.

**Tumbling**—Andy and Greg can help you learn to tumble.

**Identifying Rocks**— Tien, Jim, Tony, Bill can help you



## SOME UPCOMING ROCK SHOWS

The <http://www.cfmsinc.org/> site has rock show listings.

You can find show listings for all over the USA and Canada at <http://The-Vug.com> , the <http://www.rockngem.com> site and the magazine too.

No shows listed in California for the month of July.



**CUTTING OPAL HIGHLIGHTS**

First rule of cutting opal—GO SLOW!

Don't grind away the beauty of the stone.

Look for clues as you cut.

Look and Listen.

The general rule in lapidary is: Look a lot, cut a little. This is extremely true of opal. You can grind through the beauty of a stone in a flash.

**ORIENT THE STONE**

Orient the stone to produce the best color. Follow the stone when cutting, not a pre-plan shape. That is very different from making other types of cabs.

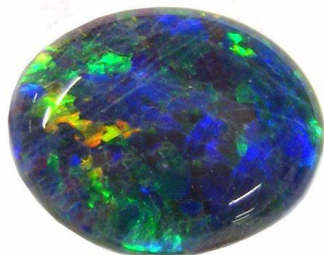
**GRIND AND POLISH**

Do not coarse grind the stone.... it tears chunks out of the stone.

Be careful when polishing with leather. The stone gets hot quickly. Cool the stone in a cup of water as you look. You can use tin oxide, Linde A, or cerium oxide to polish. You can also use 14,000 then 50,000 diamond to polish too.

**LOOK FOR SCRATCHES**

To see scratches, learn to focus on the surface, not the fire—which is below the surface. To force yourself to do this, try to read the label on the light bulb in the surface of the opal.



**PICK YOUR STONE**

Start with Coober Pedy opal from Australia. A opal with lines of color in a white background. The white background is opal without color called patch. Look for a strong or bright color line. Some Australian opal has solid color throughout. This is fine but more expensive. A dark color stone is Mintabie opal. It can be used as a first stone, but it is tricky and expensive.. However, Mexican opal or Honduraas opal are difficult first stones as well as Lightning Ridge opal.

Look for a piece no larger than 18 x 13 mm and at least 4mm thick with 3 mm between the color edge and the stone's outside edge.

Think of the stone as a book. The face of the fire line is like the cover of the book. The edge of the fire line is the thickness of the book. On your first stone, you want the line of fire to be straight. Once you start grinding the stone for orientation, stop when you know the extent and direction of the fire line. Remember to just grind a little at a time when inspecting the stone.

**ORIENT**

Direct a frosted 100 watt light overhead, your eyes should be as close as possible to the same location as the source of light. The line of color should be at the top of the stone with enough material under the line of color for the stone to be firm when setting. The brightest face should be on top.

**LOOK FOR CRACKS**

Dry the opal. Your eyes should be 90 degrees from the light bulb causing you to see the opal through the light. Move the opal around so you can look for cracks.

**NEXT MONTH, MORE ABOUT CUTTING OPALS.**



**JUNE 2019—HOBBY, FRIENDS, & FUN!**



## ROCKHOUND WEBSITES

(Use these sites at your own risk.)

### [//OBMSROCKS.YOLASITE.COM](http://OBMSROCKS.YOLASITE.COM)

Our club website.

### [//WWW.FACEBOOK.COM/](http://WWW.FACEBOOK.COM/)

Our group is “Orange Belt Mineralogical Society” OBMSrocks will get you there.

### [//GROUPS.YAHOO.COM/GROUP/LA-ROCKS/](http://GROUPS.YAHOO.COM/GROUP/LA-ROCKS/)

Full of rock enthusiasts and postings of rock hunting events.

### [//WWW.CFMSINC.ORG](http://WWW.CFMSINC.ORG)

Our club is a member of CFMS. There are lots of rock hunts scheduled.

### [//WWW.EBAY.COM](http://WWW.EBAY.COM)

Search rough rocks or rock slabs

### [//WWW.HIGHDESERTLAPIDARY.COM](http://WWW.HIGHDESERTLAPIDARY.COM)

Wide variety of slabs with good pictures. (Almost like being at Quartzsite.)

Good for learning the names of the rocks

### [//WWW.FACEBOOK.COM/](http://WWW.FACEBOOK.COM/)

“Lapidary swap shop” is a group for posting items to trade equipment, tools, rocks with other enthusiasts.

### [//WWW.SCHOOLGEMOLOGY.COM/](http://WWW.SCHOOLGEMOLOGY.COM/)

### [ISGTURQUOISEBUYERSGUIDE/INDEX.HTML](http://ISGTURQUOISEBUYERSGUIDE/INDEX.HTML)

Bob suggested this site. It discusses buying the real from the fake turquoise.

Jewelry Making Supplies:

### [//WWW.RIOGRANDE.COM](http://WWW.RIOGRANDE.COM)

Albuquerque, NM -A huge jewelry supply store. Shows the silver spot market price on its front page. Free online-videos—click on Learn with Rio. (800) 545-6566

### [//WWW.THUNDERBIRDSUPPLY.COM](http://WWW.THUNDERBIRDSUPPLY.COM)

Established in 1971. Indian jewelry supplies. Prices were good on metal. Show the silver spot market price. (800) 545-7968

## NATIONAL GEOGRAPHICS TOPOGRAPHICAL MAPS

National Geographics launched a website for printing topographical maps for free.—Thanks, Calvin.

<https://www.natgeomaps.com/trail-maps/pdf-quads/>

### [//OTTOFREI.COM](http://OTTOFREI.COM)

Oakland, CA—A complete jewelry supply store. Often 5% coupon in Art Jewelry and Lapidary Journal magazine. (800) 772-3456

## LAPIDARY EQUIPMENT & SUPPLIES:

### [//COVINGTON-ENGINEERING.COM](http://COVINGTON-ENGINEERING.COM)

☺ ☺ LOCAL ☺ ☺

### 715 WEST COLTON AVE

Redlands, CA—Manufacturer of lapidary equipment and some supplies/books. (877) 793-6636

### [//WWW.DIAMONDPACIFIC.COM/](http://WWW.DIAMONDPACIFIC.COM/)

2620 W. Main Str.

Barstow, CA—Manufacturer of lapidary equipment and some supplies/books. (800)253-2954

### [//WWW.JBFC.COM/](http://WWW.JBFC.COM/) JOHNSON BROTHERS

1452 N. Batavia St. **New Location**

Orange, CA—A variety of lapidary and some jewelry making tools.

(714) 771-7007

### [//KINGSLEYNORTH.COM](http://KINGSLEYNORTH.COM)

Norway, MI –A variety of lapidary equipment, tools, supplies, books (800) 338-9280

## MAGAZINES:

### [//WWW.JEWELRYMAKINGDAILY.COM](http://WWW.JEWELRYMAKINGDAILY.COM)

(LAPIDARY JOURNAL/JEWELRY ARTIST)

Login for free to get access to online videos and projects.

### [//WWW.ROCKNGEM.COM](http://WWW.ROCKNGEM.COM)

Show date listings.

## ROCK SUPPLIES:

### [NEWERAGEMS.COM](http://NEWERAGEMS.COM)

Grass Valley, CA—Recommended in faceting booklet. Has capping and faceting rough. (800) 752-2057

### [GEMS A PLENTY](http://GEMSAPLENTY.COM)

575 N Central Ave  
Upland, CA  
(909) 985-1999

### EARTH'S TREASURES

582 Alder Rd  
Crestline, CA 92407  
(909) 338-2010

## SHOP USE AND MAINTENANCE

**Proper use of equipment:** Help reduce the number of repairs by using the equipment carefully.

### Trim Saws

- Trim saws are used for preforming or trimming cabs from slabs. There are three trim saws: blue, red, and Rock Rascal.
- The blue trim saw has the thickest blade. This saw is the saw that should be used most of the time. Use this saw if you are trimming obsidian, agate, or harder material.
- The red saw is a lighter duty saw. It is used for cutting smaller pieces and trimming corners. It can be used to trim lighter material like howlite.
- The Rock Rascal is for specialty cutting only. It has a delicate, expensive thin blade used to trim more expensive, soft stones like turquoise and opal.

### Trim Saw Usage

- **Make sure there is water in the saw basin.**

Turn the blade on to see water drips off the blade in a light stream before cutting on a rock. This keeps the rock cool and cleans the rock bits off the blade.
- **Push lightly.**

Do not push hard against the blade. If the blade slows down or stops, you are pushing too hard. You can also listen to the cut. It should be a light sound.

Let the blade cut the rock slowly, so the diamond bits do not chip off the blade. This helps make the blade last longer.
- **When done:**

Throw the larger bits away in a scrap bucket or trash. Rinse the tray top with water and dry it clean. Replace the water if the water is cloudy.
- **Closing at the End of the Shop Day**

At the end of the day, drain the saw basin and dry the saw top. This is so the blades do not rust and last longer.

### Large Slab Saws

- The large slab saws are used for cutting rock slabs from boulders less than 2/3 the blade height.
- **Use scraps of wood wedges to make good contact.**

Carefully place shims around the rock so the vise – shims are touching many areas of the rock. Rocks need at least three good contact points.
- **Tighten the vise. Then, pull on the rock vigorously.**

Make sure the vise is tight and the rock can not move. When a rock slips, it can destroy—bend—a blade. Large saw blades are very expensive to replace. To be safe, **tighten the vise again by hand.**
- **Check the blade will not saw into the vise.**

Place the rock so the rock sticks out from the vise. Four turns of the vise knob is about ¼ inch. Make sure the rock sticks out from the end of the vise for the number of slabs you want to cut. **Recheck this every time you start a new cut.**
- **Pull the rock back away from the blade.**

Do not start the blade on the rock; pull the vise carriage back so the rock is away from the blade before starting the blade.
- **Turn the blade by hand before starting. Tighten the carriage set screws.**

Make sure the blade has no contact with the rock before starting.
- **Check there is enough oil.**

Oil should be dripping off the blade when you turn it. Otherwise, you need to add oil or unplug the tubing.
- **Stay with the saw while it is cutting.**

The blade and vise can be damaged if the saw jams after the slab has fallen.
- **When done, throw away the rock bits and wipe off the trays. Close the lid.**
- **Please do not change the belt speed.**

Leave the belts where they are set. Let the blade do the cutting slowly so the diamond stays on the blade longer.
- **Please do not change the vise stops.**

They protect the machine.

### ROCK CLEAN UP PROCESS

1. **Use the kitty litter box.** There is a box with kitty litter. Put the rock in the box and pour kitty litter over the rock to absorb the oil. Brush the kitty litter off the rock.
2. **Use the Simple Green bucket.** There is a bucket with Simple Green to help remove the oil. Dunk the rock in the bucket and use a brush to help remove the oil in crevices.
3. **Use the rinse bucket.** There is a water bucket with water in it. After steps 1 & 2, dunk the rock in the water bucket for final cleaning.

**Do not put a rock in the sink to clean it.** The sink drain was damaged—torn—by rocks sliding against it.

### GRINDERS

- **Turn main water valves on/off.**
  - There is a main water valve near the first grinder by the sink. There is another valve about every two grinders. These valves gets turned on/off depending on which set of grinders are in use to save water.
  - Each grinder has its own water valve on top of the grinder which controls the water flow to the grinder's belt.
- **Keep a light stream of water on the belt.**
  - Turn water on so there is a light stream of water on the belt before grinding a rock. - The belt should look wet as you grind.
  - This keeps the rock cool and cleans the rock bits off the belt.
- **Push lightly.**
  - Do not push hard against the belt. Harder material like agate grinds slower than soft material like turquoise.
  - Use the entire width of the belt so the belt wears evenly. If you only work in the center, a groove can form.
  - Let the belt cut the rock slowly so the dia-

### FLAT LAPS

- There are two large flat laps and two changeable top laps.
- One large wheel is for coarse 40-80 grit only. Its base is heavy duty steel and the grit does not scratch the base. There is no grit sign on this wheel.
- The other large wheel is for finer grit of 220 or more. The wheel can be scratched by the coarser grit. Only use fine grit on this wheel. It has a 220 sign on the outside of the box.
- Finer polishing of slab/geode material should be done on one of the other two laps with changeable tops.
- **When done,** wash off the grit and dry the wheel.

### POLISHING WHEEL

- **Keep spraying water on the cerium-oxide polishing wheels** while you work. It should be a fine slush, paste to polish properly. Keeping the wheel wet keeps the rock cool and lets the polish flow over the rock.
- Note: Dry polishing is bad on the lungs. Wear a mask if you decide to do that..

### CLOSING

- **Grinders:** Make sure all the water valves are closed. Mop in front of the grinders.
- **Water Trim Saws:** Trim saws should be **drained before closing and the trays rinsed off.** The waste water should be poured out in the parking lot trough and the sediment dumped into the dumpster.
- **Tripoli/Rouge Polishing Station:** Wipe the tray out and throw the loose fibers away.
- **Wax pot:** Unplug the wax pots and iron.
- **Soldering Station:** Check the torch is turned off and check the pickle pot is unplugged.
- **Empty the trash**
  - Look around and tidy up.
- **Turn the Main Breakers Switch Off**

**OBMS Workshop**

205 West Benedict #8  
San Bernardino, CA 92408  
PH (909) 381-0089

**Workshop Hours**

**Tuesday**

4 p.m.— 8 p.m.

**Wednesday**

9 am—1 pm

**Friday**

4 p.m.— 8 p.m.

**Saturday**

10:00 a.m. – 3:00 p.m.

**2nd & 4th Sunday**

10 a.m.— 2:00 p.m.

**Monthly Club Meeting**

The SECOND Saturday of the month at the workshop most of the time.

**Monthly BBQ or Picnic**

The SECOND Saturday of the month right after the club meeting. Bring your favorite dish to share .

Sun	Mon	Tue	Wed	Thu	Fri	Sat
<b>July 2019</b>	<b>1</b>	<b>2</b> Shop 4—8	<b>3</b> Shop 9—1	<b>4</b> 5	<b>Shop</b> 4—8	<b>6</b> Shop 10—3
<b>7</b> Bracelet Class 11 a.m.	<b>8</b>	<b>9</b> Shop 4—8	<b>10</b> Shop 9—1	<b>11</b>	<b>12</b> Shop 4—8 ☞	<b>13</b> Shop 10—3 Mtg/ Picnic 11:30 a.m.
<b>14</b> Shop 10—2	<b>15</b>	<b>16</b> Shop 4—8	<b>17</b> Shop 9—1	<b>18</b>	<b>19</b> Shop 4—8	<b>20</b> Shop 10— 3
<b>21</b>	<b>22</b>	<b>23</b> Shop 4—8	<b>24</b> Shop 9—1	<b>25</b>	<b>26</b> Shop 4—8	<b>27</b> Shop 10—3
<b>28</b> Shop 10—2	<b>29</b>	<b>30</b> Shop 4—8	<b>31</b> Shop 9—1		<b>Shop</b> 4—8	<b>Shop</b> 10—3

Orange Belt Mineralogical Society, Inc.  
205 West Benedict #8  
San Bernardino,  
CA 92408

Newsletter articles and advertisement are due by the 20<sup>th</sup> of the month.

Send information for the newsletter to Kim at [kimrocks2@sbcglobal.net](mailto:kimrocks2@sbcglobal.net)

